

STORM DRAIN STRUCTURE SCHEDULE						
NO.	TYPE	LOCATION	TOP ELEV.	INV. IN	INV. OUT	COMMENTS
I-1	DOUBLE TYPE 'S' COMBINATION		493.00	-	490.50	MODIFIED MD 374.71 W/ CATCH BASIN FILTER (SEE FLOW SPLITTER STR. SHEET ?? OF ??)
S-1	-		493.67	489.55	489.55	MODULAR WETLAND SYSTEM STRUCTURE
F-1	-		-	489.00	489.00	FIELD CONNECTION PIPES
M-1	48" MANHOLE		494.15	488.00	485.00	MD-384.01 (48" MH)
E-1	-		-	486.00	-	END WALL

SWM & STORM DRAIN PIPE SCHEDULE	
TYPE	LENGTH
15" ALUMINIZED CMP (12 GA)	27 ±
18" RCP (CLASS III)	48 ±

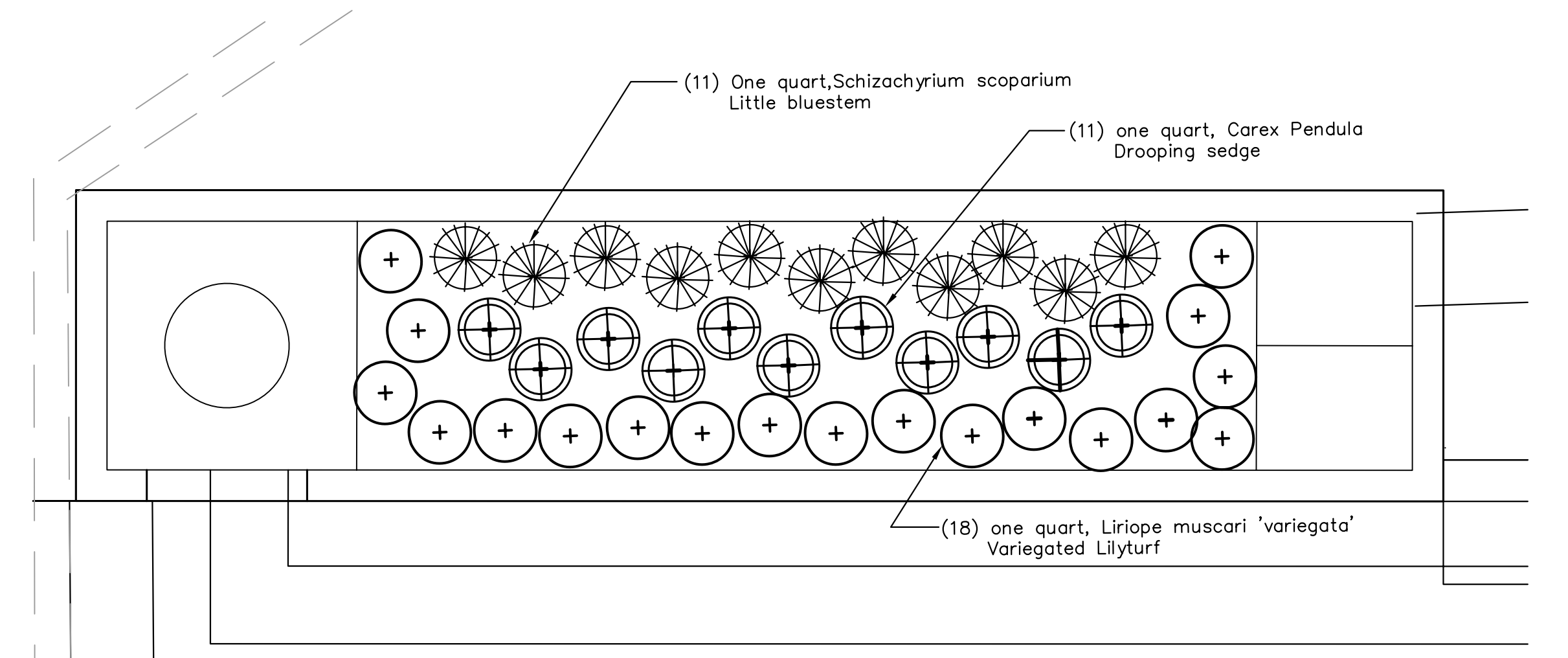
LINE TABLE		
LINE #	LENGTH	DIRECTION
LI	42.67'	S67°27'15"E

CURVE DATA					
CURVE #	DELTA	RADIUS	LENGTH	TANGENT	CHORD
C1	150°46'32"	19.00'	50.00'	72.88'	N33°10'34"E 36.77'
C2	15°32'14"	254.00'	68.88'	34.62'	S10°42'16"E 66.67'
C3	62°18'22"	38.00'	41.32'	22.97'	N36°18'04"W 39.32'

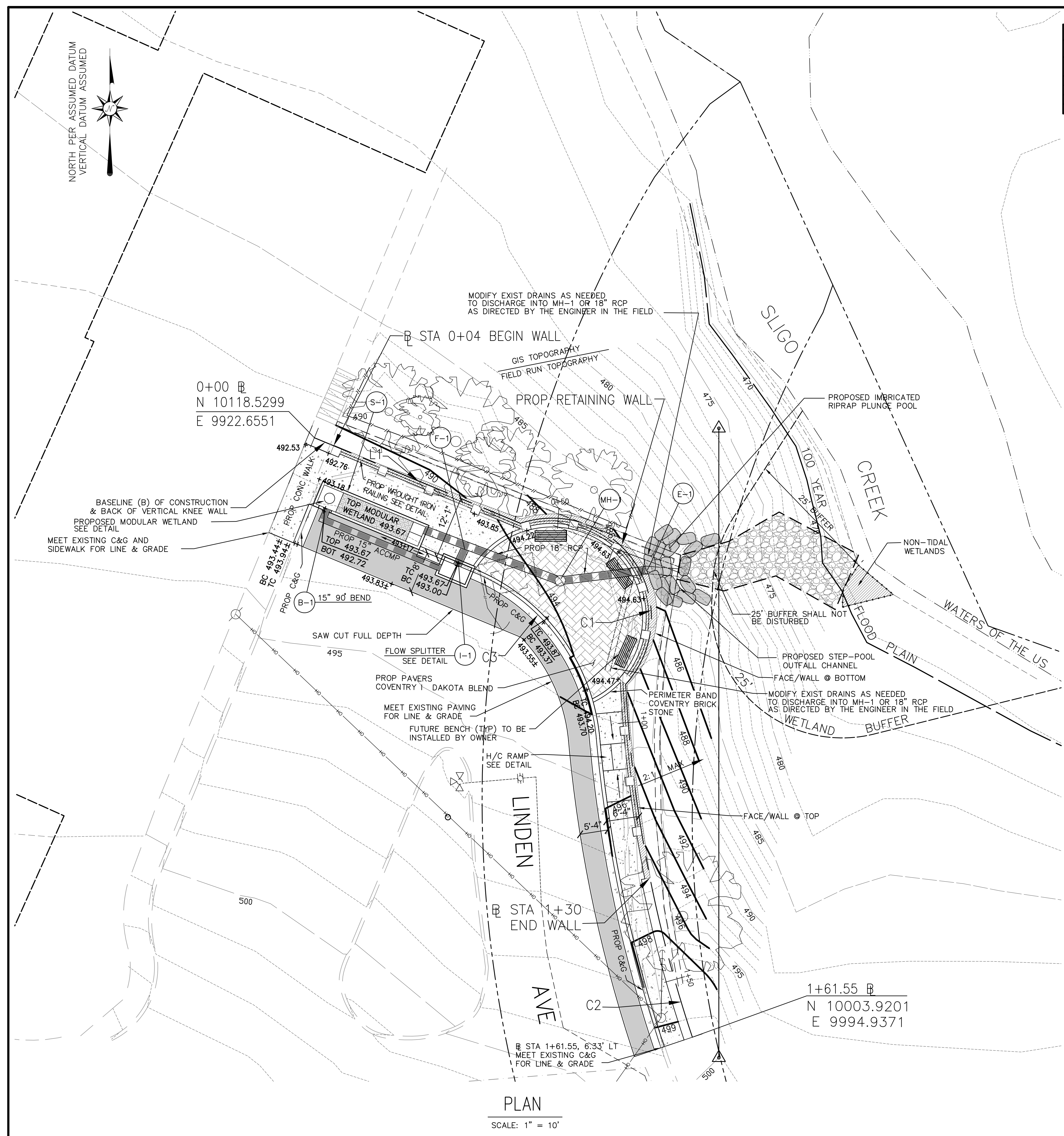
- ### LEGEND
- FIRE HYDRANT
  - WATER VALVE
  - CURB & GUTTER
  - UTILITY POLE
  - EXISTING OVERHEAD LINES
  - APPROXIMATE BOUNDARY LINE
  - TREE PROTECTION FENCE
  - EXISTING STORM DRAIN
  - EXISTING WALL
  - EXISTING WATER MAIN
  - EXISTING GAS MAIN
  - EXISTING MAJOR CONTOUR
  - EXISTING MINOR CONTOUR
  - PROPOSED STORM DRAIN
  - PROPOSED C&G
  - BRICK PAVERS
  - HMA PAVING SECTION
  - CONCRETE

### PLANTING NOTES

- IN THE ABSENCE OF A CONTRACT PROJECT MANUAL CONTAINING PLANTING SPECIFICATIONS, PLANTING PROCEDURES AND MATERIALS SHALL COMPLY WITH THE LANDSCAPE SPECIFICATION GUIDELINES FOR BALTIMORE-WASHINGTON METROPOLITAN AREAS, LATEST EDITION, APPROVED BY THE LANDSCAPE CONTRACTORS ASSOCIATION OF MARYLAND, WASHINGTON AND VIRGINIA OR THE MONTGOMERY COUNTY LANDSCAPE MANUAL, WHICHEVER IS GREATER.
- PLANT MATERIAL LOCATIONS SHOWN ARE DIAGRAMMATIC AND MAY BE SUBJECT TO CHANGE IN THE FIELD BY THE OWNER'S REPRESENTATIVE.
- LANDSCAPE PLANTING AND RELATED WORK SHALL BE PERFORMED BY A FIRM WITH A MINIMUM OF FIVE YEARS OF LANDSCAPING EXPERIENCE.
- DELIVERY OF PLANT MATERIALS SHALL BE FULLY IDENTIFIED WITH THE PLANT NAME AND THE SUPPLIER.
- PLANTS SHALL BE PLANTED IN THE MEDIA PROVIDED BY MODULAR WETLANDS INC.
- PLANTS SHALL BE INSTALLED BETWEEN MARCH 1 AND MAY 31 OR BETWEEN SEPTEMBER 1 AND NOVEMBER 15, UNLESS APPROVED BY OWNER. PLANTS SHALL BE PLANTED ON APPROXIMATE 18" CENTERS.
- PLANTS SHALL BE SOUND, HEALTHY AND VIGOROUS.
- CONTRACTOR SHALL WARRANT THE MATERIALS AND INSTALLATION FOR A PERIOD OF ONE YEAR WARRANTY DURING WHICH THE CONTRACTOR SHALL HAVE RESPONSIBILITY FOR ALL MAINTENANCE OF PLANT MATERIAL AND SOIL MEDIA.



PLANTING PLAN  
1" = 5'



PLAN  
SCALE: 1" = 10'

PROJECT: TAKOMA PARK LINDEN AVE WATER QUALITY RETROFIT & RETAINING WALL REMEDIATION

TITLE: SITE, GRADING AND UTILITY PLAN

**T.E. SCOTT+ASSOCIATES**  
LANDSCAPE | STORMWATER | ENVIRONMENT  
128 Cockeysville Road, Ste 200 p: 410.458.2651  
Hunt Valley, MD 21030 f: 443.269.0216  
tes@mdswm.com www.mdswm.com

PROFESSIONAL CERTIFICATION: I HEREBY CERTIFY THAT THESE DOCUMENTS WERE PREPARED OR APPROVED BY ME AND THAT I AM DULY LICENSED PROFESSIONAL ENGINEER UNDER THE LAWS OF THE STATE OF MARYLAND, LICENSE No. 32602, EXPIRATION DATE: 1-15-2010.

Designed By: TES/WRK	Scale: AS SHOWN	Proj. No. 0901
Drawn By: TAM	Date: 6/29/09	
Checked By: TES	Approved	SHEET 3 OF 11

