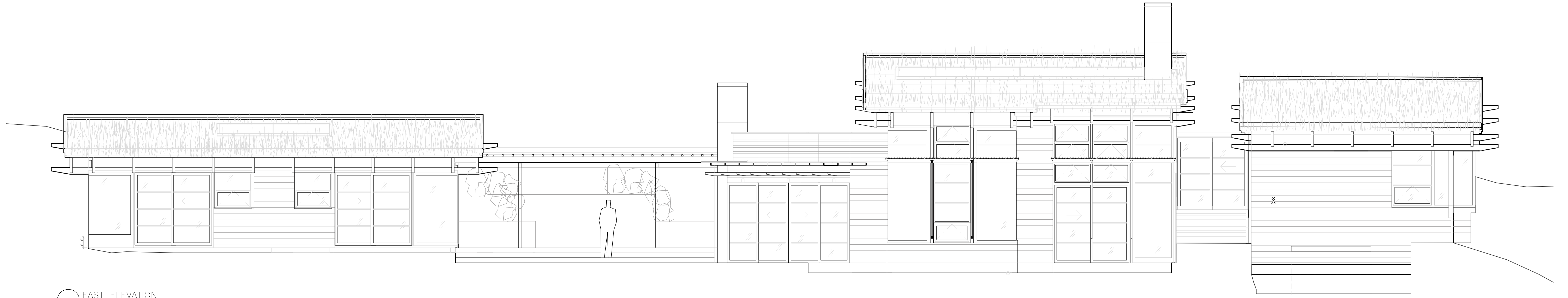
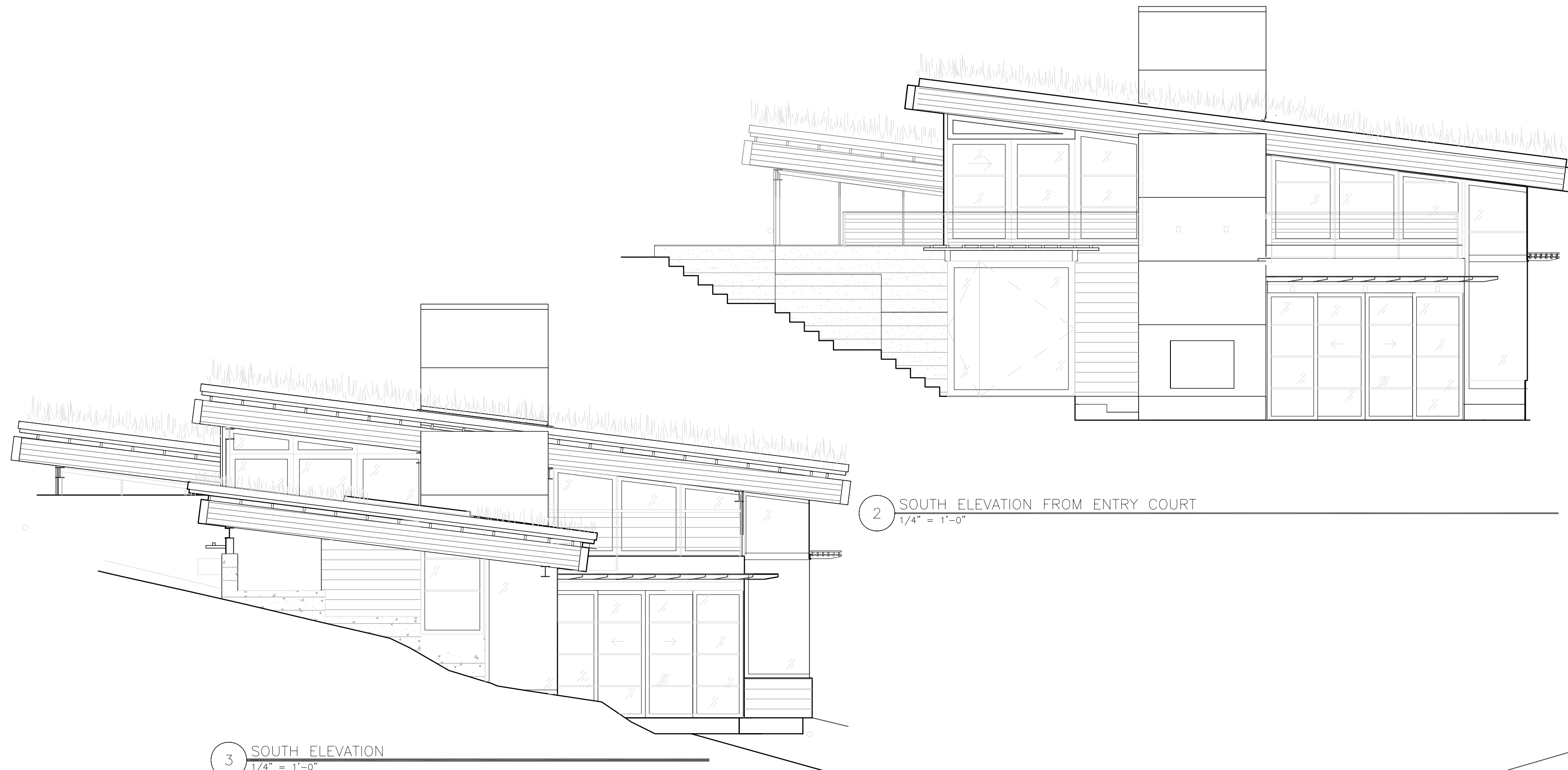


5 NORTH ELEVATION
1/4" = 1'-0"



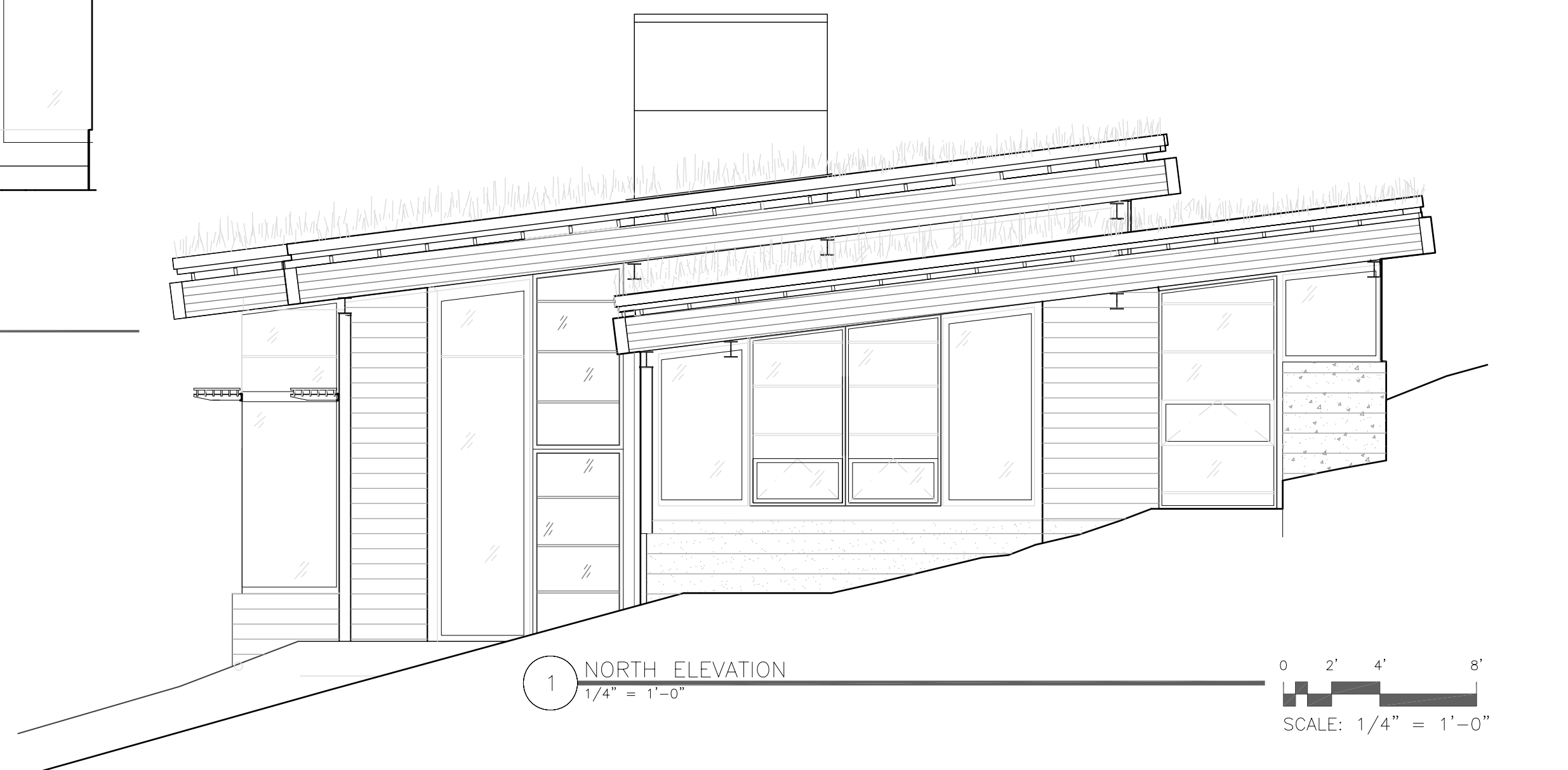
4 EAST ELEVATION
1/4" = 1'-0"



3 SOUTH ELEVATION
1/4" = 1'-0"



2 SOUTH ELEVATION FROM ENTRY COURT
1/4" = 1'-0"



1 NORTH ELEVATION
1/4" = 1'-0"

0 2' 4' 8'
SCALE: 1/4" = 1'-0"